

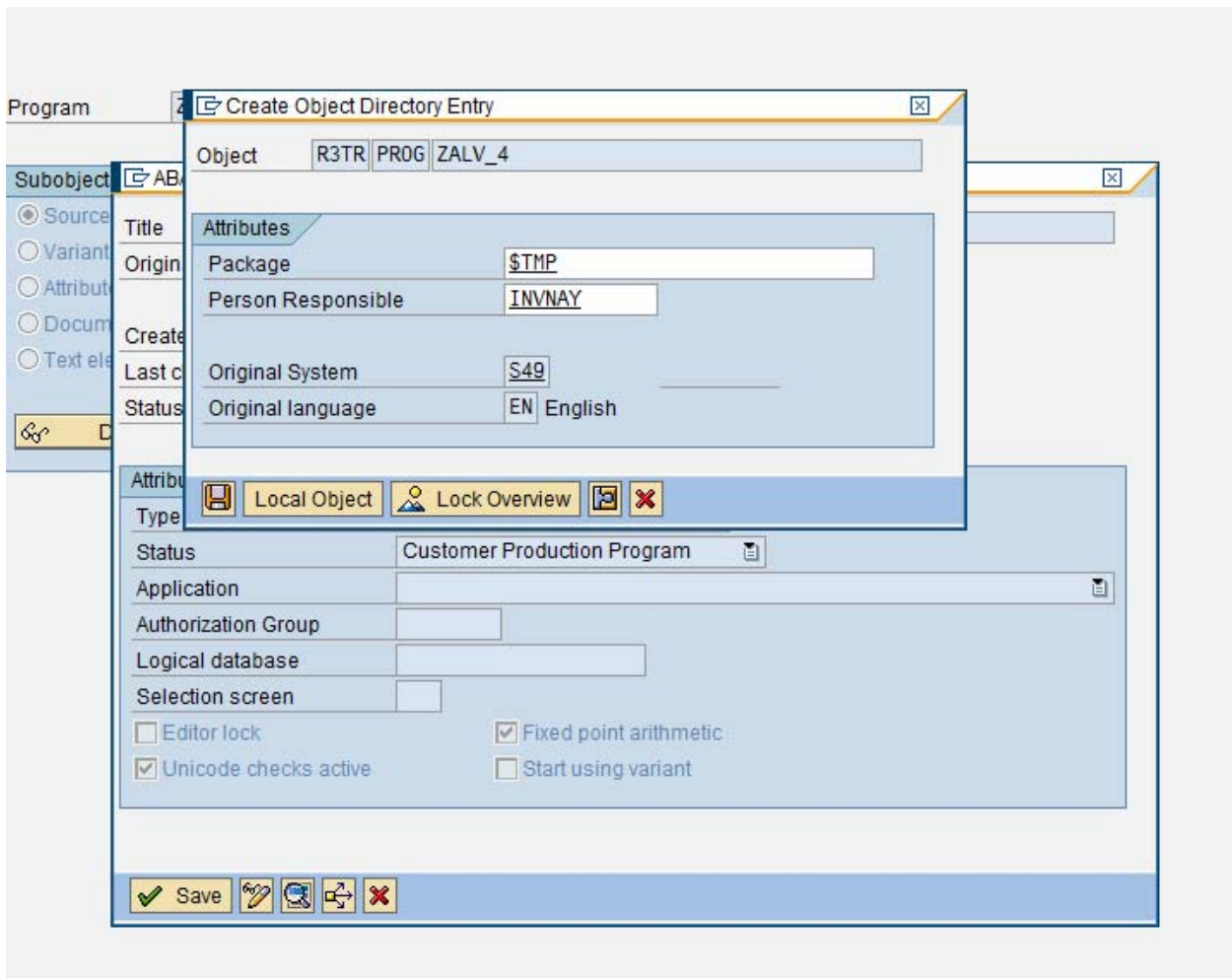
Scenario – The selection screen has the selection parameters for selecting the Sales Org, Date, Executive, Crc, product, sicc code , ship to party and sold to party.

Also he can select either the orders or the invoices checkbox.

Finally he has the option to see the list in the classical report if the 'Use Alv layout' is not checked and either grid or list display if it is checked.

According the selections entered, the calculations are done based on whether the orders or invoices or both. Depending on the pricing conditions and condition records, the customer data is fetched and displayed in the output.

This is also an interactive report where on clicking the SO/Inv number, it directly goes to display the SO or the Invoice.



The code for the report is in the following attachment.



zalv_4.txt

When executed the selection screen is displayed as below. After entering the selection we can click on the Display list push button at the tool bar to get the output.

Manually Priced Orders

DisplayList DisplayVariant

Selection Criteria

Sales Org .	<input type="text"/>	to	<input type="text"/>	<input type="button" value="↕"/>
Document Creation Date	12.03.2011	to	<input type="text"/>	<input type="button" value="↕"/>
Sales Executive	<input type="text"/>	to	<input type="text"/>	<input type="button" value="↕"/>
CRC	<input type="text"/>	to	<input type="text"/>	<input type="button" value="↕"/>
Product	<input type="text"/>	to	<input type="text"/>	<input type="button" value="↕"/>
SICC code	<input type="text"/>	to	<input type="text"/>	<input type="button" value="↕"/>
Ship-to party	<input type="text"/>	to	<input type="text"/>	<input type="button" value="↕"/>
Sold-to party	<input type="text"/>	to	<input type="text"/>	<input type="button" value="↕"/>

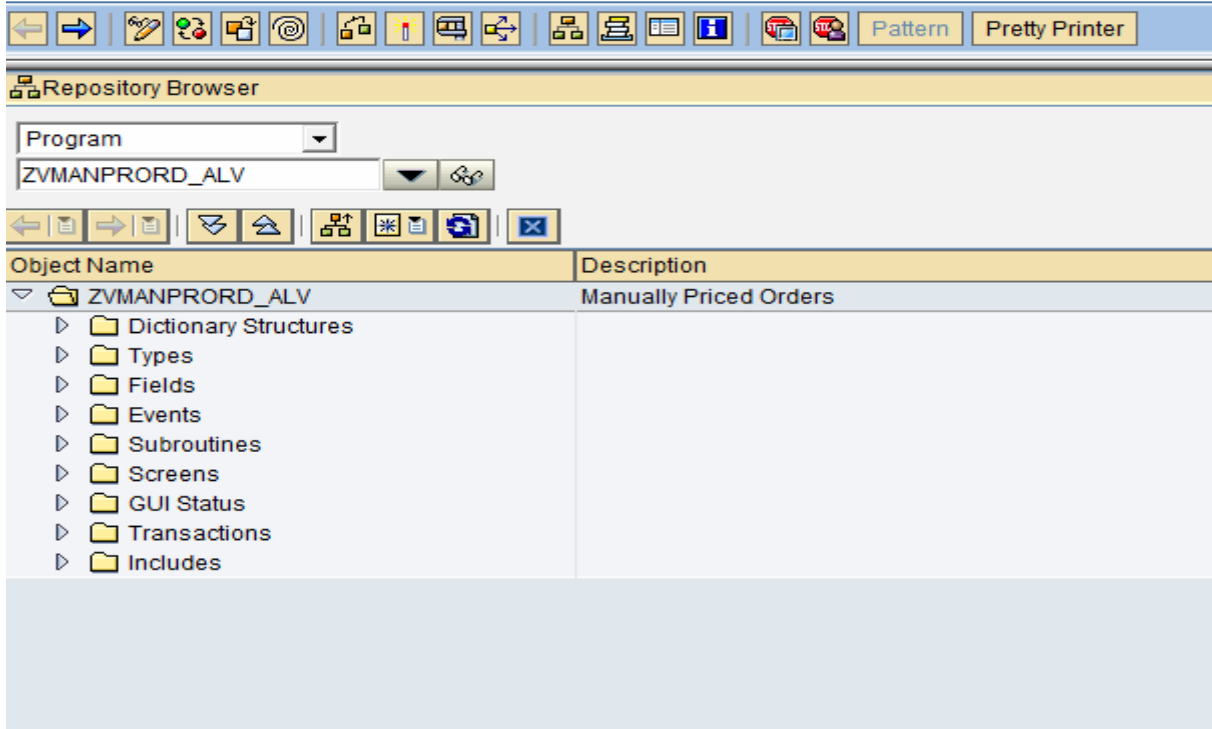
Orders
 Invoices

ALV layout

Use ALV Layout ALV -List ALV-Grid

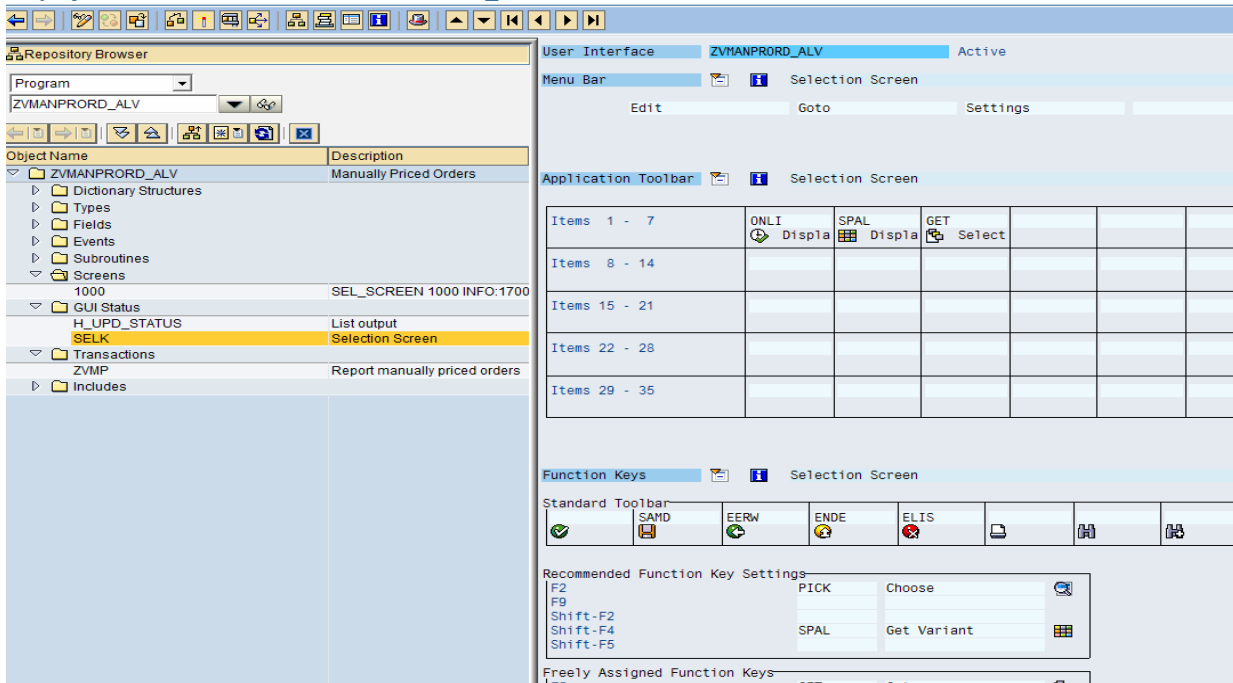
This is the display of all the objects of the program.

ABAP Editor: Display Report ZVMANPRORD_ALV



Here we can see the status bar 'H_upd_status' (Custom) and the 'SELK' (for the selection screen)

Display Status SELK, Interface ZVMANPRORD_ALV



Display Status H_UPD_STATUS, Interface ZVMANPRORD_ALV

The screenshot displays the SAP GUI configuration for the interface ZVMANPRORD_ALV. On the left, the Repository Browser shows the object H_UPD_STATUS under the GUI Status folder. The main area shows the User Interface configuration, including a Menu Bar with options like List, Edit, Goto, and Settings. Below the menu bar is the Application Toolbar, which contains various icons for navigation and actions. The Function Keys section shows the configuration for standard function keys like F4, F2, and F9.

Output for the ALV List display ->

Manually Priced Orders

SOrg	Created	SaTy	Document	Item	Created on	Material	SICC	Description	Sold-To	Sold-To Name	Ship-To	Ship-To Name
MY01	ZMYMBO	ZFOR	1000000000	10	26.06.2009	57010008	SX100	SHELL GTL SARAWAX SX100-700kg bag	600086	SANKYU INC., IWAKUNI BRANCH	600060	NIPPON SEIRO CI
MY01	ZMYMBO	ZFOR	1000000000	10	26.06.2009	57010008	SX100	SHELL GTL SARAWAX SX100-700kg bag	600086	SANKYU INC., IWAKUNI BRANCH	600060	NIPPON SEIRO CI
MY01	ZMYMBO	ZFOR	1000000003	10	26.06.2009	57010027	PX105	BARECO PX-105 - 700kg Bag	600150	NAN YA PLASTICS (XIAMEN) CO LTD	600047	BAKER PETROLITI
MY01	ZMYMBO	ZFOR	1000000003	10	26.06.2009	57010027	PX105	BARECO PX-105 - 700kg Bag	600150	NAN YA PLASTICS (XIAMEN) CO LTD	600047	BAKER PETROLITI
MY01	ZMYMBO	ZFOR	1000000004	10	26.06.2009	57010005	EP866	EPIWAX EP866 - 25kg Carton	600316	PT ROLINEX KIMIA NUSANAS	600048	EPICHEM INTERNA'
MY01	ZMYMBO	ZFOR	1000000004	10	26.06.2009	57010005	EP866	EPIWAX EP866 - 25kg Carton	600316	PT ROLINEX KIMIA NUSANAS	600048	EPICHEM INTERNA'
MY01	ZMYMBO	ZFOR	1000000005	10	26.06.2009	57010007	EP858	EPIWAX EP858 - 25kg Carton	600294	THONG NHAT MATCH	600048	EPICHEM INTERNA'
MY01	ZMYMBO	ZFOR	1000000005	10	26.06.2009	57010007	EP858	EPIWAX EP858 - 25kg Carton	600294	THONG NHAT MATCH	600048	EPICHEM INTERNA'
MY01	ZMYMBO	ZFOR	1000000006	10	26.06.2009	57010005	EP866	EPIWAX EP866 - 25kg Carton	600248	PT. INDAC INTERNATIONAL BATTERY	600048	EPICHEM INTERNA'
MY01	ZMYMBO	ZFOR	1000000006	10	26.06.2009	57010005	EP866	EPIWAX EP866 - 25kg Carton	600248	PT. INDAC INTERNATIONAL BATTERY	600048	EPICHEM INTERNA'
MY01	ZMYMBO	ZFOR	1000000007	10	26.06.2009	57010005	EP866	EPIWAX EP866 - 25kg Carton	600305	Universal Candle Vietnam Company	600048	EPICHEM INTERNA'
MY01	ZMYMBO	ZFOR	1000000007	10	26.06.2009	57010005	EP866	EPIWAX EP866 - 25kg Carton	600305	Universal Candle Vietnam Company	600048	EPICHEM INTERNA'
MY01	ZMYMBO	ZFOR	1000000008	10	26.06.2009	57010005	EP866	EPIWAX EP866 - 25kg Carton	600248	PT. INDAC INTERNATIONAL BATTERY	600048	EPICHEM INTERNA'
MY01	ZMYMBO	ZFOR	1000000008	10	26.06.2009	57010005	EP866	EPIWAX EP866 - 25kg Carton	600248	PT. INDAC INTERNATIONAL BATTERY	600048	EPICHEM INTERNA'
MY01	ZMYMBO	ZFOR	1000000009	10	26.06.2009	57010024	FT105	FT-105 - 20kg Bag	600085	SANKYU INC., SANTOTSU WAREHOUSE	600060	NIPPON SEIRO CI
MY01	ZMYMBO	ZFOR	1000000009	10	26.06.2009	57010024	FT105	FT-105 - 20kg Bag	600085	SANKYU INC., SANTOTSU WAREHOUSE	600060	NIPPON SEIRO CI
MY01	ZMYMBO	ZFOR	1000000010	10	26.06.2009	57010013	FT100	FT-100 - 20kg Bag	600085	SANKYU INC., SANTOTSU WAREHOUSE	600060	NIPPON SEIRO CI
MY01	ZMYMBO	ZFOR	1000000010	10	26.06.2009	57010013	FT100	FT-100 - 20kg Bag	600085	SANKYU INC., SANTOTSU WAREHOUSE	600060	NIPPON SEIRO CI
MY01	ZMYMBO	ZFOR	1000000011	10	26.06.2009	57010024	FT105	FT-105 - 20kg Bag	600083	TOSOH LOGISTICS CORPORATION,	600060	NIPPON SEIRO CI
MY01	ZMYMBO	ZFOR	1000000011	10	26.06.2009	57010024	FT105	FT-105 - 20kg Bag	600083	TOSOH LOGISTICS CORPORATION,	600060	NIPPON SEIRO CI

On double clicking the SO number, we directly navigate to the SO.

Display Standard Order w/FF 100000000: Overview

Orders

Sales area: [redacted] / 01 / 01 Sales Grp: MY1 Sales Off: KL

Sold-to party: 600000 [redacted]

Ship-to party: 600000 [redacted]

Standard Order: 100000000 Net value: 239,400.00 USD

PO number: FT-0905496-NSF9 PO date: 28.04.2009

Sales | Item overview | Item detail | Ordering party | Procurement | Shipping | Reason for rejection

Req. deliv.date: D 01.06.2009 Deliver.Plant: Currency: USD

Contact person: H. HIRAO Cont. tel. Last order

Contact note

All items

Item	Material	Order Quantity	SU	D	First Date	Description	P	Plant	SL
	1057618608	126.000	TNE	D	01.06.2009	[redacted]		D002	