

Brought to you by:

<http://www.FreeSapTutorial.com>

Scenario – Here we need to input the invoice document in the selection.

As per the selected invoices, we need to get the details of the purchase order documents and the line item details. In the list, when clicked on the invoice, should lead to the invoice document and when clicked on the PO, should lead to the PO display and when clicked on the material, should lead to the material display screens respectively.


- 1) Here we need to do the data selection initially from the table rbpk and store it in the internal table tab_arbkp.
- 2) Once the data is fetched, we need to fetch the data from the table rseg for all the entries in the table tab_arbkp.
- 3) The field catalog is created in the internal table t_fieldcat.
- 4) The data is all sent into the standard function module REUSE_ALV_GRID_DISPLAY along with the field catalog t_fieldcat.
- 5) The parameter i_callback_user_command is passed with the constant 'user_command'.
- 6) The form user_command has the code to call the event / call the transaction code to go into invoice document or PO or Material display
- 7) The code for the program is available in the following attachment.



alv with events.txt

- 8) Execute the code and we get the following selection screen where we can input the invoice document numbers

Trigger ALV with events

Invoice Document to 

Brought to you by:


<http://www.FreeSapTutorial.com>

Brought to you by:

<http://www.FreeSapTutorial.com>

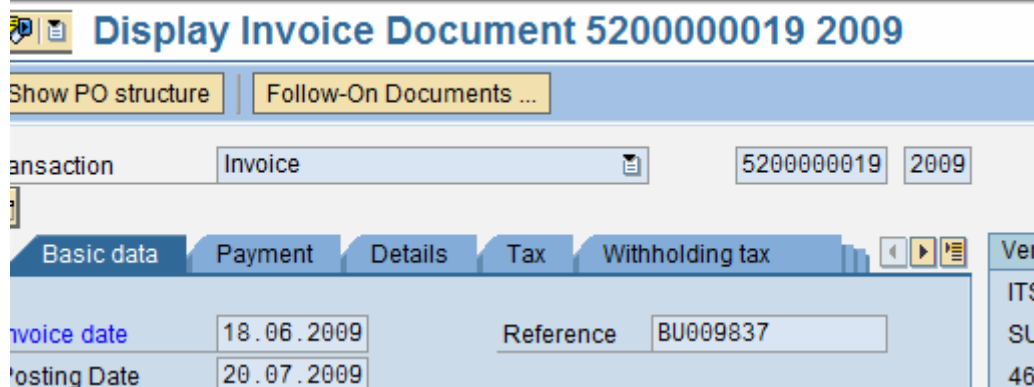
9) Input some test data and execute it. We get the output list with the following data.

Trigger ALV with events



Doc. No.	Year	Purch.Doc.	Item	Material	Co...	
5200000000	2009	4500000000	1		MY01	A991
5200000010	2009	4500000301	10		MY01	A991
5200000011	2009	4500000289	10		MY01	A991
5200000012	2009	4500000288	10		MY01	A991
5200000013	2009	4500000271	10		MY01	A991
5200000014	2009	4500000286	10		MY01	A991
5200000015	2009	4500000305	10		MY01	A991
5200000016	2009	4500000277	10		MY01	A991
5200000017	2009	4500000277	10		MY01	A991
5200000018	2009	4500000305	10		MY01	A991
5200000019	2009	4500000305	10		MY01	A991
5200000020	2009	4500000290	10		MY01	A991
5200000022	2009	4500000285	1		MY01	A991
5200000023	2009	4500000121	10		MY01	A991
5200000024	2009	4500000121	10		MY01	A991
5200000025	2009	4500000121	10		MY01	A991
5200000026	2009	4500000121	10		MY01	A991

10) When double clicked on the invoice document, we get to go to the mir4 screen.



Display Invoice Document 5200000019 2009

Show PO structure | Follow-On Documents ...

Transaction: Invoice | 5200000019 | 2009

Basic data | Payment | Details | Tax | Withholding tax

Invoice date: 18.06.2009 | Reference: BU009837

Posting Date: 20.07.2009

Brought to you by:

<http://www.FreeSapTutorial.com>

Brought to you by:

<http://www.FreeSapTutorial.com>

11) Click on the back button (F3) and double click on any PO field

<u>200000010</u>	200€	4500000301	10		MY01	A991
<u>200000011</u>	200€	4500000289	10		MY01	A991
<u>200000012</u>	200€	4500000288	10		MY01	A991
<u>200000013</u>	200€	4500000271	10		MY01	A991
<u>200000014</u>	200€	450000028	10		MY01	A991
<u>200000015</u>	200€	4500000305	10		MY01	A991
<u>200000016</u>	200€	4500000277	10		MY01	A991
<u>200000017</u>	200€	4500000277	10		MY01	A991

12) We now go to screen me23n and we can see the PO in display mode

Standard PO 4500000286 Created by Joseph Wong

Document Overview On | Print Preview | Messages | Personal Setting

← Back | → Forward | ✕ Close

Standard PO | 4500000286 | Vendor: 7001874 ITS TESTING SERVICES | Doc. date: 1

Delivery/Invoice | Conditions | **Texts** | Address | Communication | Partners | Additional Data

Header Texts | A

- Header text
- Header note
- Pricing types
- Deadlines

Continuous-text

S	Itm	A	I	Material	Short Text	PO Quantity	O	C	Deliv. Date	Net Price
	10	F	D		Inspection Fee MT Torero		1	ACT D	13.07.2009	

13) Go back again and now double click on any of the material number

Brought to you by:

<http://www.FreeSapTutorial.com>

Brought to you by:

<http://www.FreeSapTutorial.com>

<u>200000033</u>	200€	4500000437	10			MY01	A991
<u>200000034</u>	200€	4500000436	10			MY01	A991
<u>200000035</u>	200€	4500000287	10			MY01	A991
<u>200000036</u>	200€	4500000439	10			MY01	A991
<u>200000037</u>	200€	4500000438	10			MY01	A991
<u>200000038</u>	200€	4500000440	10			MY01	A991
<u>200000039</u>	200€	4500000441	10			MY01	A991
<u>200000040</u>	200€	4500000442	10			MY01	A991
<u>200000041</u>	200€	4500000443	10			MY01	A991
<u>200000042</u>	200€	4500000549	1			MY01	A991
<u>200000043</u>	200€	4500000285	1			MY01	A991
<u>200000044</u>	200€	4500000285	1			MY01	A991
<u>200000045</u>	200€	4500000285	1			MY01	A991
<u>200000046</u>	200€	4500000301	10			MY01	A991
<u>200000047</u>	200€	4500000478	10	98000378	<input type="checkbox"/>	MY01	A091
<u>200000048</u>	200€	4500000685	10	47010022		MY01	A091
<u>200000049</u>	200€	4500000686	10	47010022		MY01	A091

Brought to you by:

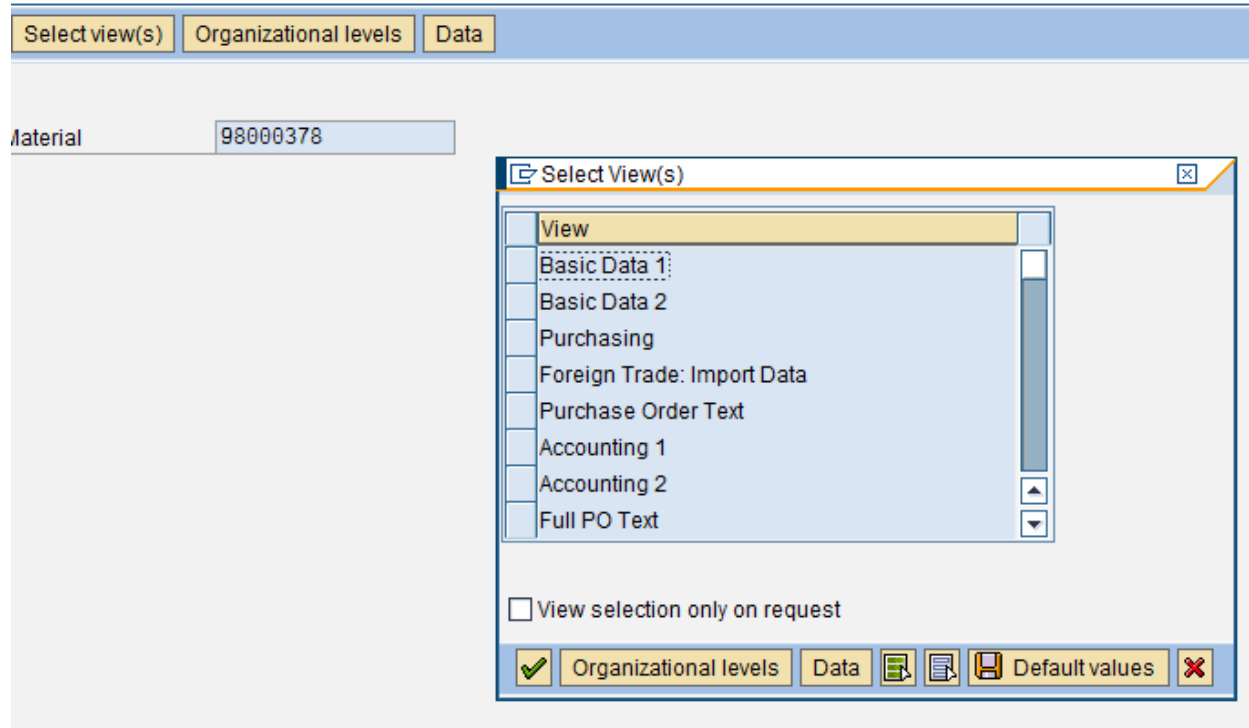
<http://www.FreeSapTutorial.com>

Brought to you by:

<http://www.FreeSapTutorial.com>

14) We can see the material mm03 screen being called and can select the interested tabs and then view the material data.

Display Material (Initial Screen)



Brought to you by:

<http://www.FreeSapTutorial.com>